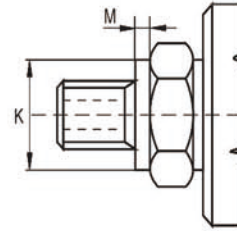


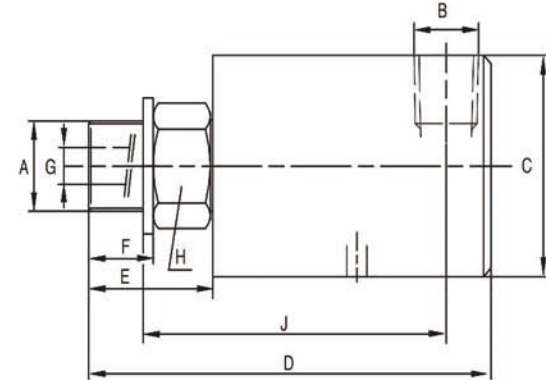
SHEET1

Rev:	Date:	By	Chk	Description
A.1	9/18/12	PJE	RAW	EC0 0045
A.2	10/06/12	JWW	PJE	EC0 0192

Type	A	B	C	D	E	F	G	H	J	K	M	Weight (Kg)	
GA003002503	M10 X 1	RH	1/8" NPT	31	72	22	11	3,2	17	54	-	0,15	
GA003002505	M10 X 1	RH	1/8" NPT	31	72	22	11	3,2	17	54	11 ⁰ _{-0,011}	3	0,15
GA003002504	G 1/4" (BSP)	RH	1/8" NPT	31	72	22	13	3,2	17	52	-	0,15	
GA006015830	1/4" NPT	RH	1/4" NPT	39	82	26	17	6,5	22	58	-	0,5	
GA006000594	5/8" - 18 UNF	RH	1/4" NPT	39	81	25	16	6,5	22	58	-	0,5	
GA006003592	5/8" - 18 UNF	LH	1/4" NPT	39	81	25	16	6,5	22	58	-	0,5	
GA006002506	G 1/4" (BSP)	RH	1/4" NPT	39	81	25	13	6,5	22	61	-	0,5	
GA006002507	G 1/4" (BSP)	LH	1/4" NPT	39	81	25	13	6,5	22	61	-	0,5	
GA009015831	3/8" NPT	RH	3/8" NPT	44	101	27	17	8,5	22	72,5	-	0,5	
GA009002510	5/8" - 18 UNF	RH	3/8" NPT	44	100	26	16	8,5	22	72,5	-	0,5	
GA009003594	5/8" - 18 UNF	LH	3/8" NPT	44	100	26	16	8,5	22	72,5	-	0,5	
GA009000601	G 3/8" (BSP)	RH	3/8" NPT	44	100	26	16	8,5	22	72,5	-	0,5	
GA009003593	G 3/8" (BSP)	LH	3/8" NPT	44	100	26	16	8,5	22	72,5	-	0,5	
GA009001590	M16 X 2	RH	3/8" NPT	44	100	26	16	8,5	22	72,5	-	0,5	
GA012015832	1/2" NPT	RH	1/2" NPT	59	118	37	22	13	36	86	-	0,7	
GA012001248	3/4" - 16 UNF	RH	1/2" NPT	59	115	34	19	13	36	86	-	0,7	
GA012003596	3/4" - 16 UNF	LH	1/2" NPT	59	115	34	19	13	36	86	-	0,7	
GA012002217	G 1/2" (BSP)	RH	1/2" NPT	59	115	34	19	13	36	86	-	0,7	
GA012003597	G 1/2" (BSP)	LH	1/2" NPT	59	115	34	19	13	36	86	-	0,7	
GA012002316	G 3/4" (BSP)	RH	1/2" NPT	59	115	34	19	13	36	86	-	0,7	
GA012003598	G 3/4" (BSP)	LH	1/2" NPT	59	115	34	19	13	36	86	-	0,7	
GA012003595	M20 X 1,5	RH	1/2" NPT	59	115	34	19	13	36	86	22 ^{-0,007} _{-0,020}	5	0,7
GA012003599	M20 X 1,5	LH	1/2" NPT	59	115	34	19	13	36	86	22 ^{-0,007} _{-0,020}	5	0,7
GA012002431	M22 X 1,5	RH	1/2" NPT	59	115	34	19	13	36	86	27 ^{-0,007} _{-0,020}	3	0,7
GA012003600	M22 X 1,5	LH	1/2" NPT	59	115	34	19	13	36	86	27 ^{-0,007} _{-0,020}	3	0,7



Rotor with pilot



Drawn	JSM	6/2/03
Checked	PJE	13/43/05
Checked	PJE	11/36/08

TOLERANCE
EXCEPT AS NOTED
x.x ± .125
x.xx ± 0.15
x.xxx ± 0.005
ANGLES ± 0.5°

HIDNEY

深圳市欣德利机电设备有限公司

TEL:0755-27222664

CUSTOMER:

STOCK

P/N:

REV:

A 4

CUSTOMER APPROVAL/DATE:

THIS DOCUMENT CONTAINS INFORMATION WHICH IS PROPRIETARY TO DYNAMIC SEALING TECHNOLOGIES, INC. (HIDNEY). NO REPRODUCTION OR PUBLICATION OF THIS DOCUMENT OR ITS CONTENTS, IN WHOLE OR PART SHALL BE MADE WITHOUT THE WRITTEN CONSENT FROM HIDNEY.

SHAFT MEL/PLTING:
CARBON STL
94-62 RC
BLK OXIDE

SHAFT MEL/PLTING:
CARBON STL
BLK OXIDE

技术参数:
介质: 气 介质: 冷却液 介质: 油
最高转速: 1500RPM 最高转速: 3500RPM 最高转速: 3500RPM
最高温度: 120° C 最高温度: 120° C 最高温度: 120° C
最大压力: 10BAR 最大压力: 70BAR 最大压力: 105BAR

THIRD ANGLE PROJECTION:

